

## PA Beginning to Feel Effects

Governor Edward G. Rendell said last week that Pennsylvania's nonfarm job count fell by 1,600 jobs in July, indicating that the state is beginning to feel the effects of a worsening national economy. The nation lost 51,000 jobs in July. The Governor pointed to recent job creation, business expansion and community improvement investments of more than \$659 million as the way for Pennsylvania to regain its footing for future workforce and economic growth.

The state's unemployment rate, rose to 5.4 percent in July and the national unemployment rate increased to 5.7 percent. Unemployment in Pennsylvania has been at or below the national rate for 65 of the past 67 months.

"Although our economy has been weathering the downturn better than the nation in recent months, both the state and the nation took a hit in July," Governor Rendell said. "It is important for us to continue to take matters into our own hands with our own solution to this national problem. Our strategy of investing in our communities, businesses and workers is the solution – and one that has proven to be successful.

"In the past two weeks, I announced \$659 million in state funding for projects in 26 counties that will keep nearly 30,000 Pennsylvanians working. This investment will leverage more than \$1.3 billion in matching private and public funding – for a total of more than \$1.9 billion pumped into our economy. Investments like this keep us primed for growth. By investing in jobs and business expansion, we have the opportunity to gain the needed momentum to carry us through the national economic downturn."

The Governor pointed to the investments in the state's infrastructure, in particular, as one way to help spur job growth in some of our hardest-hit job sectors.

"Our construction sector is strong, although we have seen some job losses in recent months," Governor Rendell noted. "Many of the projects I announced in the past two weeks will require construction workers. The jobs created by these projects will help stem the job losses we're seeing now, and have the potential to add to our growth in the future.

"In addition, the 411 bridges in this year's accelerated repair

*(Continued on page 2)*

### What's going on This Week.....

---

#### **"Resumes & Cover Letters"**

Presented by Sharone G.

Mon, August 18th 9-11:30 am

---

#### **"Intro to CareerLink Services"**

Presented by Sharone G.

Tue, August 19th, 10:00-11:00 am

---

#### **"Interview Basics"**

Presented by Sharone G.

Tue, August 19th, 12:00-1:30 pm

---

#### **"Salary Negotiation"**

Presented by Sharone G.

Tue, August 19th, 1:30-2:00 pm

---

#### **"Career Exploration"**

Presented by Sharone G.

Wed, August 20th, 9:00-2:30pm

---

#### **"Legal Barriers to Employment"**

Presented by NE PA Legal Services

Fri., August 22nd, 10:00-11:00 am

program will require enough concrete to build 16,000 homes, which would be equal to a 60 percent increase in new home construction,” Governor Rendell said. “That bridge work will demand enough steel to build four Eiffel Towers.

“These investments represent more than the physical restoration of Pennsylvania. We are restoring and strengthening the confidence of our businesses, workers and citizens to let them know that they are not alone in this difficult national economy, and that state government is doing its part to create opportunities for economic success right now and for the future.”



# Welcome New Partner!

**Smith and Solomon** is a leader in providing commercial driver training. **Smith & Solomon** delivers a wide range of training programs designed to help people obtain a commercial drivers license, as well as prepare them for a job in the transportation industry. The primary courses offered to students are the CDL A, the CDL B and either of these with the addition of passenger endorsement. **Smith & Solomon** also offers forklift training.

Our mission is to provide the highest quality driving instruction offered throughout the United States. We are committed to teaching each student the safety and responsibility issues inherent in driving a commercial vehicle. We will only put safe and responsible drivers on the road, and our training and instruction emphasize these important elements. We are committed to placing each graduate in a job within the transportation industry. For more information, contact **Sheryl Youngblood** at 570-602-8783.

# DUAL ENROLLMENTS

Recent survey's show that TAA affected dislocated workers are in need of core and intensive services offered by enrollment in both the Trade and WIA programs provided by both **BWDP** and **WIA CareerLink** staff. An application for a National Emergency Grant (NEG) that would help to fund these activities was submitted, and on July, 1st, a grant in the amount of \$12.4 million was awarded to Pennsylvania to serve workers affected by specific TAA related dislocations. This funding will be used to support both **BWDP** and **WIA** staff, and is the first of its kind in the country.

Of the \$12.4 million Pennsylvania has received an initial increment of \$5.6 million. Additional funding, up to the amount approved, will be available as Pennsylvania demonstrates a continued need to serve workers affected by specific company layoffs. The funds generally will not be used for training for Trade impacted workers, but will be used to provide all the timely and necessary dual enrollment services mandated by both WIA and Trade programs.

## HAPPY AUGUST BIRTHDAY.....



*Ann Marie DePue*

*Debbie Harrison*

*Edie Schramm*

*Linda Ryan*





# TEAMOLOGY

*TEAM: A number of persons associated together in work or activity to perform a common goal.*



## NEW FACES AT CAREERLINK...MEET Smith & Solomon

The start of the new program year brought new partners, thus new faces at the **PA CareerLink Monroe County**. At this time we would like to welcome and introduce **Sheryl Youngblood**, Enrollment Counselor for **Smith & Solomon**. She will be stationed in our office every Wednesday, with the exception of the 2nd week of the month, where she will be in on Tuesday to represent **Smith & Solomon**.



You can reach **Sheryl** at 570-602-8780, or email [syoungblood@smithsolomon.com](mailto:syoungblood@smithsolomon.com). We are so glad to have you here at the **CareerLink!**

## Business Services TEAM

Weiler Corp. will be at the **CareerLink** on Monday afternoon Aug. 25th from 12:30 - 4:00 in the Large conference room. They are recruiting for a toolmaker, an electronic industrial maintenance person, and for equipment operators for 2nd and 3rd shifts. Public advertisements will appear in the Pocono Record on Wed. Aug 20th and Sunday Aug 24th.



## Customer Information & Resource TEAM

Do Have Legal Employment Questions?...A Criminal Record?...Are You An Ex-Offender? Plan to Attend "**Legal Barriers to Employment**", Friday, August 22, 2008, 10:00-11:00 am in the **CareerLink** Conference Room. This seminar is presented by Attorney's from North Penn Legal Services Inc.

## Administration TEAM

The Ladies Auxiliary at the East Stroudsburg VFW is collecting coupons (current), Mr. Z's cash register tapes and Campbell Soup Can labels will all proceeds from these fund raisers go to our troops stationed overseas. If anyone wants to contribute, please see **Nancy Henry**, who will deliver them to the items to the VFW.





# JOB ORDERS Spotlight



## Horizon Milling (cargill)

—Warehouse Loader  
-web 587795



## Carbon Monroe Pike MHMR

—Caseworker I  
-web 583928

## Pocono Pool & Spa

—Pool Construction Supervisor  
-web 587740

## S & K Construction

—Heavy Equipment Operator  
-web 580861

## Hayward Laboratories

—Inventory Lead  
-web 587136

## Burnley Workshop of the Pocono

—Driver  
-web 587001

## Pennstar Bank, NA

—Customer Service Rep MPO  
-web 584194

## The Village at Camelback

—Lifeguard  
-web 583109



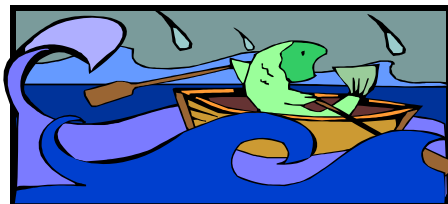
## WRITING ON THE WALL

**The most successful businessman  
is the man who holds onto  
the old just as long as it is good,  
and grabs the new just as  
soon as it is better.**

**-Lee Iacocca**

Merchants Plaza  
P.O. Box 789  
Tannersville, PA 18372-0789

Phone: 570-620-2850  
Fax: 570-620-2868  
Fax: 570-620-0546  
TTY: 570-620-2854



Any submission, request or question to be included in the FYI can be submitted to Deborah Harrison, at:

dahmcc1@ptd.net  
Phone: 570-620-0782  
Fax: 570-620-0546  
TTY: 570-620-2854

