

## PA'S UNEMPLOYMENT RATE BELOW NATIONAL LEVEL

Governor Edward G. Rendell said last month that despite Pennsylvania's unemployment rate dropping to 4.9 percent in March, the commonwealth lost 2,900 jobs, indicating legislative action is needed to stabilize the economy.

"This is the second consecutive month we've lost thousands of jobs," Governor Rendell said. "While our unemployment rate is better than the national average, losing 2,900 jobs shows that the national economic downturn threatens the prosperity Pennsylvania businesses, workers and communities have enjoyed.

"Every day that the General Assembly delays action on economic stimulus is another day our residents are vulnerable to the national economic turmoil. To change the direction of our economy, our General Assembly must stand up for workers and businesses by passing the economic stimulus plan now."

Pennsylvania lost 8,800 jobs in February.

"Our targeted, strategic economic investments have helped Pennsylvania prosper and they have minimized the effects of the growing economic downturn being felt throughout the nation," he said. "We have two choices now: wait and hope we can weather the economic storm; or pass legislation approving the economic stimulus initiatives I proposed in February to protect our prosperity.

"Financial indicators are showing more signs that the nation is headed towards a recession and we have a responsibility to let our citizens know that state government is doing everything possible to keep them working," Governor Rendell said. "Nationally, there are high job losses, and the highest number of initial unemployment claims filed since the tragedy of Hurricane Katrina. While we can't control a natural disaster, we can do something about the situation that faces us now.

### What's going on Next Week.....

---

#### **"One on One Resume Writing"**

Presented by Sharone G.  
Mon., May 5th 9-11:30 am

---

#### **"Intro to CareerLink Services"**

Presented by Sharone Glasco  
Tue, May 6th, 10:00-11:00 am

---

#### **"Interview Basics"**

Presented by Sharone G.  
Tue, May 6th 12-1:30 pm

---

#### **"Salary Negotiation"**

Presented by Sharone Glasco  
Tue, May 6th, 1:30-2:00 pm

---

#### **"Computerized O'Net Assessment"**

Presented by Ken O.  
Wed, May 7th 9-10:30 am

---

#### **"Computer Basics"**

Presented by Ken O.  
Fri, May 9th 9-10:00 am

# CAREER Quest Still Rocks

The 6th Annual *CAREER Quest*, held on April 15th at the Ferwood Events Center, was once again a resounding success! Close to 1,100 job seekers came through the doors to network with over 80 vendors. The Preliminary returns of the surveys from job seekers and employers revealed overall satisfaction with the event. Many commented that it was well organized and attracted a large and diversified number of vendors. We are very pleased and fortunate to have the opportunity to provide this special event to the Pocono Community, especially in light of the sluggish economic development. The **PA Career Link Staff** and *CAREER Quest Committee* could not have accomplished this alone. We wish to give **Special Thanks** to *CAREER Quest's* Major Sponsor the **Pocono Record** and the Host, **Fernwood Hotel & Resort**. The **Monroe County Transportation Authority** provided free bus service to the job fair, with **Access Office Technologies** supporting business operations.



## GETTING THE SHOW ON THE ROAD

The Logistics & Transportation Industry is the backbone of our economy. Moving and managing everything from the food we eat, to the i-pods we listen to, to the furniture in our homes and everything else we see in every store we visit. It is a growing industry with interesting careers. The Northeast PA Logistics & Transportation Industry Partnership **ON THE ROAD SHOW** will be visiting a site in the counties of Northeast Pennsylvania every Thursday in May from 10:00 a.m. to 5:00 p.m. The show will be in Monroe County, May 15, 2008 at **Northampton Community College**, 3 Old Mill Road, Tannersville, PA 18372.

A focal point of the On the Road Show will be the display of tractor-trailers from participating industry partners like Keystone Automotive, a brand new Martz Group bus, the Pennsylvania Motor Trucking Association (PMTA) Safety demonstration trailer, forklifts and other equipment.

Logistics & Transportation Industry companies in the area of the events will be on hand. Talk to employers and find out about careers in this fast growing industry. **CareerLink Staff** will be on hand to answer questions about training, job openings, money for school and more.

The Logistics & Transportation Industry is all about movement - on the road, in the warehouse, and up the career ladder. People in this industry are going places - learning new skills and employing state-of-the-art technology. You cannot stand still in this industry - you must **Get Going!**

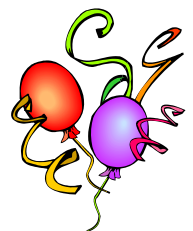
*HAPPY MAY BIRTHDAY to:*

*John Casella*

*Don Langlois*

*Charlie Montalbano*

*Paul Leonard*





# TEAMOLOGY

*TEAM: A number of persons associated together in work or activity to perform a common goal.*

CareerLink

## Welcome Aboard!



We would like to take this opportunity to extend a big **CareerLink** welcome to some new faces "on the scene"!

Last month **Mary Donato** joined **Goodwill Industries** as an Employment Specialist, and will be in our office on Tuesdays and Thursdays.

Also from **Goodwill**, Employment Specialist **Stefany Kemp**, can be found in the Career Resource Room on Fridays. We are glad to have you both on board!

## Business Services TEAM



The US Census Bureau is beginning recruiting efforts that will lead to the 2010 Census. They have signed contracts to open Early Local Census Offices in the following locations in Pennsylvania– Philadelphia, Harrisburg, Pittsburgh, Erie and Scranton. Looking to Recruit 6 managers for each office, these are Full Time, Temporary positions. Once those offices are operational, another 40 to 50 staff in each office will be added. In January 2009 they will be looking to hire between 200 - 300 field staff (work from their home) for each of these offices. This time next year we will open an additional 12 offices in PA. The field staff, for each of those 17 offices, will be at least 600.

The Census Bureau would like to receive resumes for the following management positions immediately:

- Local Census Office Manager (LCOM)
- Assistant Manager for Recruiting (AMR)
- Assistant Manager for Administration (AMA)
- Assistant Manager for Field Operations (AMFO)
- Assistant Manager for Quality Assurance (AMQA)
- Assistant Manager for Technology (AMT)



There is an open job order on [www.cwds.state.pa.us](http://www.cwds.state.pa.us), number 562455. When participants hit "I want to apply" on the CWDS web-site, they will be directed to the Census web-site. Qualified candidates can electronically send resumes to [philadelphia.rcc.recruiting@census.gov](mailto:philadelphia.rcc.recruiting@census.gov), or give to **CareerLink Staff** and they will be forwarded to the Census Bureau.



## Careerlink TEAM Meeting Schedule

**Administration Team:** Monday, May 19th at 10:00 am.

**Career Guidance Team:** Thursday, May 22nd at 9:00 am.

**Customer Information & Resource Team:** Tuesday, May 6th at 2:00 pm.

**Business Services Team:** Wednesday, May 21 at 9:00 am.



# JOB ORDERS Spotlight



### Horizon Milling (Cargill)

—Entry Level Milling  
-web 559691

### Penn Star Bank, N.A.

—Customer Service Rep  
-web 562153  
—Teller Supervisor II  
-web 562138

### Checkbook Systems

—Collections Clerk  
-web 561156

### Pocono YMCA

—Camp Supervisor I Summer  
-web 559648  
—Fitness Director  
-web 559594

### Wendy's Restaurant

—Manager I  
-web 562698



### Weiler Corp

—Toolmaker Day Shift  
-web 556948

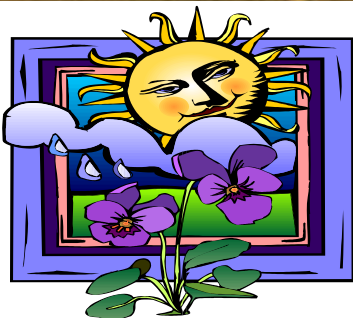
## Writing on The Wall....

**The measure of success  
is not whether you have a  
tough problem to deal with,  
but whether it is the same problem  
you had last year.**

**-John Foster Dulles**

Merchants Plaza  
P.O. Box 789  
Tannersville, PA 18372-0789

Phone: 570-620-2850  
Fax: 570-620-2868  
Fax: 570-620-0546  
TTY: 570-620-2854



Any submission, request or question to be included in the FYI can be submitted to Deborah Harrison, at:

dahmcc1@ptd.net  
Phone: 570-620-0782  
Fax: 570-620-0546  
TTY: 570-620-2854

